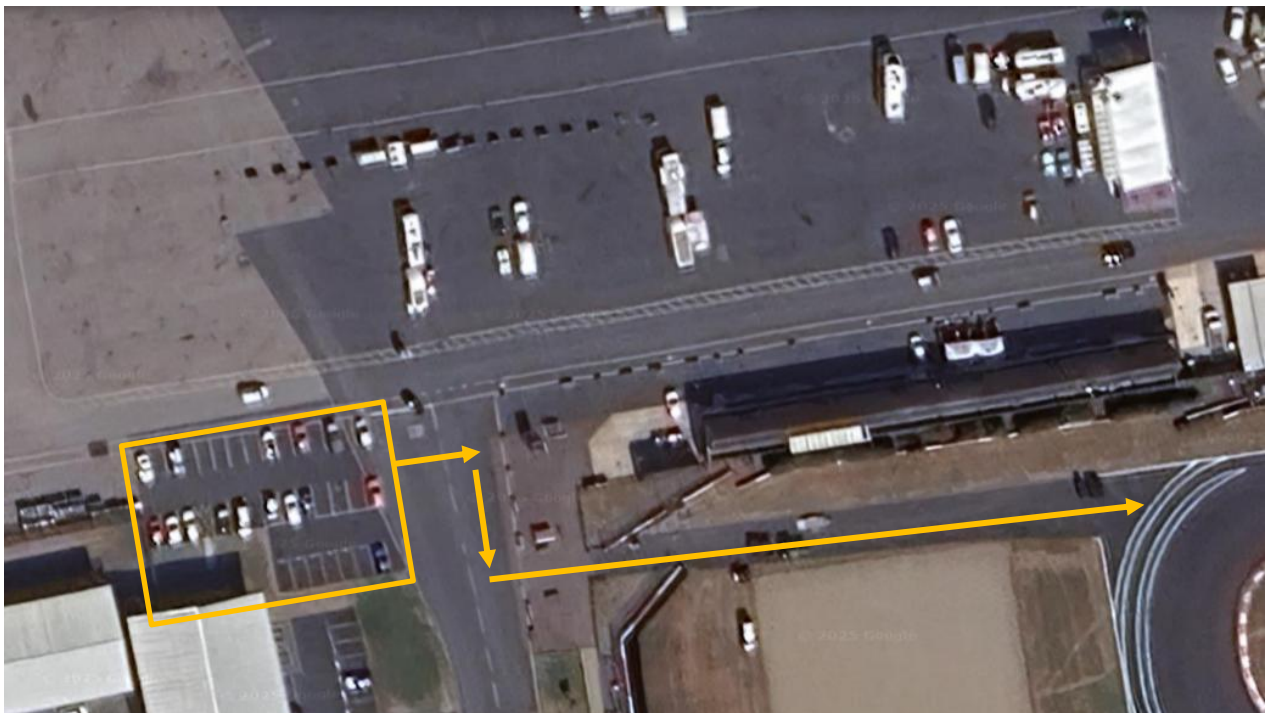


Race Directors notes Round 7 – Donington GP – V3

1. As a clarification for the stoppage of session using a red flag.
 - a. Practice session
During practice sessions, the session time (“The clock”) will continue to run.
The session could be extended at the Race Directors discretion, IF the timetable allows it.
 - b. Qualifying sessions
During qualifying sessions, the session time (“The clock”) will STOP.
The session could be restarted at the Race Directors discretion, IF the timetable allows it.
 - c. Race sessions
During qualifying sessions, the session time (“The clock”) will STOP.
The session could be restarted at the Race Directors discretion, IF the timetable allows it.
2. Transfer route from the preassembly area.
Prior to all sessions the following route must be followed.
Should a car be late for the start of a session, it must go AT WALKING PACE to the pitlane entry next to the restaurant (Garage 39).

Car route



Trolley route



3. Leaving the preassembly area.

- a. In qualifying sessions, GB3 Championship representatives will be in the assembly area, assuring the cars are lined up in the correct qualifying order.
It is allowed to go directly to the pitlane instead of crossing the start line, should a driver wish to do so.
 - i. Between Q1 and Q2 cars are NOT allowed to queue in the pitlane. The procedure for leaving the working area will be one by one in the correct qualifying order. Should a driver choose to wait in the working area the team must make the car before and after them aware.
 - ii. **Should a qualifying be stopped by a red flag, the cars must go back to the working lane, stop in 45 degree and leave one-by-one in qualifying order when the session is restarted.**
- b. In race sessions, GB3 Championship representatives will be in the assembly area, assuring the cars are lined up in the correct grid order.
When the cars leave the preassembly area they must go straight to the grid, unless instructed otherwise.

4. Cars must always leave under their own power

- c. At all times cars must leave the awning, preassembly area, pitlane and grid under their own power. At no time can they be pushed while the cars is in gear, the car must be in neutral.
- d. The cars can be jumpstarted using a battery, and as soon as the battery is removed the car can leave.
- e. Should a car stall during the start of the green flag lap or at the start of the race, the car is allowed to be pushed, by marshals from the grid, to the pitlane, where the



team can jumpstart, the car using point 4.b and still adhering to point 4.a.